

Nozzle Type: WRC 297

Nozzle Node: 121

Vessel Node (optional): 120

✓ Direction Cosines
 VX: VY: VZ:

Nozzle Details

Outer Diameter: 4800.000

Wall Thickness: 24.000

Distance to Stiffener or Head:

Distance to Opposite Stiffener:

Vessel Details

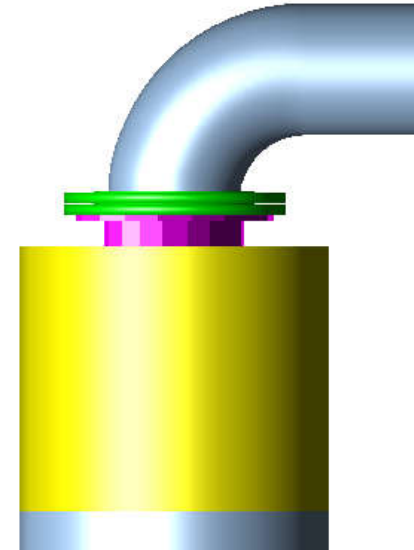
Outer Diameter:

Wall Thickness:

Pad Thickness:

Temperature (optional):

Material (optional):



Nozzle Type: Custom

Nozzle Node: 121

Vessel Node (optional): 120

Direction Cosines
 ✓ VX: VY: VZ:

Custom Stiffnesses

Axial (Nozzle):

In-Plane Bending:

Out-of-Plane Bending:

Torsional (Nozzle):

Nozzle Details (Informational only)

Outer Diameter: 4800.000

Wall Thickness: 24.000

Vessel Details (Informational only)

Outer Diameter:

Wall Thickness:

Pad Thickness:

Material:

